

Having trouble viewing this email? [Click here](#)



## Lincoln Park Community Shelter News

### In This Issue

[Connect with LPCS!](#)

[Volunteer Spotlight](#)

[Have A Heart Drive](#)

[Metamorphosis Party 2012](#)

[Volunteer Opportunities](#)

### Are you connected with LPCS?



### Have A Heart in February



On some mornings when you walk into LPCS, you are greeted by the smell of pancakes and cooking bacon. Several times a month, guests are treated to breakfast provided by volunteers. Sometimes it is as simple as bagels and fruit, and sometimes as fancy as bacon, danishes, and egg scrambles. On days when there is no volunteer group, LPCS provides breakfast for our guests, typically cereal and coffee. As you can imagine, it takes quite a bit of each of those things to feed 35 people each morning and that is why last February, LPCS teamed up with the Clark Street SSA and several businesses on Clark Street to hold a breakfast food drive to collect cereal, coffee, sugar, non-dairy creamer, and other non-perishable breakfast items. This year, we are thrilled to be teaming up with even more businesses for our month-long breakfast food drive.

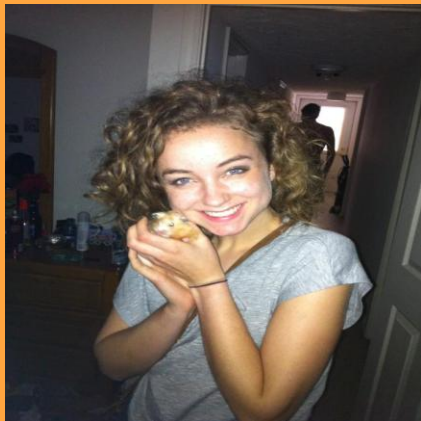
The following businesses are even offering a

## At A Glance

At the National Alliance to End Homelessness conference in July, we learned that the American economy is not "out of the woods" in regard to homeless services across the country, despite the fact that many service budgets have been cut at the federal and state levels. Take a look at LPCS' successes over the last year [here](#).

*"I finally found people willing and doing the work to make me a productive person in society once again."*

--Joey, LPCS guest



## Volunteer Spotlight: Rose Medcalf

Rose, originally from Indianapolis, is currently a student at DePaul University, just down the street from LPCS! After stumbling upon the LPCS website, searching for a place to volunteer, she fell in love with the mission and people, and has been here

discount with a donation!

- [Abeille Beauty](#)--10% off of a haircut
- [Cycle Smithy](#)--10% off of any 2012 bike
- [Frankie's On the Park](#)--10% off your purchase
- [Holtzmann's](#)--25% off in-store merchandise
- [New Balance Chicago](#)--10% off your purchase

For a complete list of participating businesses and their locations, visit:

<http://www.lpcsonline.org/events/heart>



**SAVE THE DATE**

METAMORPHOSIS  
PARTY

FRIDAY, APRIL 27TH

ARCHITECTURAL ARTIFACTS  
4325 NORTH RAVENSWOOD AVENUE

**Tickets on sale now!**

## Volunteer Opportunities

Thank you for all of your help and support in October! Please email [LPCInfo@LPCOnline.org](mailto:LPCInfo@LPCOnline.org)

ever since. She began her volunteering with LPCS about a year ago as a dinner volunteer. Four months ago she decided to change things up by volunteering at the front desk on Friday mornings. Since that time, she has truly ingrained herself as a member of the LPCS community. Never too busy to chat with guests, Rose loves getting to know everyone, and hearing their story. She really is a friend to all.

When asked what her most memorable experience at LPCS has been thus far, Rose said her first dinner. She was blown away by the gratefulness of the guests.

While we wish Rose could be at the front desk all the time, she does have other hobbies, including singing, running, reading, and yoga! Sometimes she even goes to see a movie, such as a recent favorite, *Hugo*.

If Rose could do it all over, she says she wouldn't change a thing! We are extremely grateful for that because we love having her around. Thanks, Rose, for all of the time and energy you have put into not just volunteering, but becoming a part of our community!

or call (773) 549-6111 x 216 to sign up.

### **Overnight Volunteers**

There are several open overnights in January and almost all of February, so please take a look at the [Volunteer Information Center](#) to sign up if you haven't already. Thank you!!

#### **Friday, January 27th Saturday, January 28th**

Monday, January 30th  
Tuesday, January 31st  
Wednesday, February 1st  
Thursday, February 2nd  
Friday, February 3rd  
Saturday, February 4th  
Sunday, February 5th  
Monday, February 6th  
Tuesday, February 7th  
Thursday, February 9th  
Friday, February 10th  
Saturday, February 11th  
Sunday, February 12th  
Tuesday, February 14th  
Wednesday, February 15th

### **Sack Lunch Volunteers**

The following sack lunch dates are available:

Tuesday, January 31st  
Thursday, February 2nd  
Wednesday, February 8th  
Thursday, February 9th  
Tuesday, February 14th  
Monday, February 20th  
Tuesday, February 21st  
Thursday, February 23rd

### **Daily Breakfast**

There are many opportunities open to make daily breakfast. To see what dates are available, please log into the [Volunteer Information Center](#) or contact Elli at [lpccinfo@lpccsonline.org](mailto:lpccinfo@lpccsonline.org).

**Front Desk Volunteers** Sign up for your Winter front desk shifts! To see what shifts are available check out the [Volunteer Information Center](#).

Thank you for volunteering!

[Forward email](#)



Try it FREE today.

This email was sent to [hpressman@lpcsonline.org](mailto:hpressman@lpcsonline.org) by [lpcinfo@lpcsonline.org](mailto:lpcinfo@lpcsonline.org) |  
[Update Profile/Email Address](#) | Instant removal with [SafeUnsubscribe™](#) | [Privacy Policy](#).  
Lincoln Park Community Shelter | 600 West Fullerton Parkway | Chicago | IL | 60614